

# Newsletter

NADLEH WHUT'EN NEWSLETTER

May 3rd, 2024



May 5th March for MMIW in Vanderhoof- page 8 & 9

Pic by Johnny Ketlo.

1

## CONTEST INSIDE!

Find the Sbalyan and get a chance to win a 50 dollar gift certificate from Nadleh store.



2

## EMPLOYMENT

New job posting for Assistant.

11

## LANGUAGE

Crossword Puzzle.

15

## CALENDAR

New Health Centre Calendar for March 2024.



**Nadleh Whut'en Indian Band (NWIB)  
Whuz Noolh'en Administrative Assistant  
2 Year Term Position 35.0 hours bi-weekly**

**PRIMARY RESPONSIBILITIES**

1. Provides administrative support to the Nadleh Whut'en *Whuz Noolh'en* project
2. Schedules, maintains and organizes the *Whuz Noolh'en* calendar: coordinates meetings, training, statement gathering, wellness supports and other gatherings
3. Records and distributes complete meeting minutes
4. Assists with reporting requirements to the community and funders
5. Prepares and dispatches notices and correspondence to the community
6. Establishes and maintains confidential files and records
7. Executes required documentation in accordance with NWIB administrative and financial policy and procedures
8. Contributes to the project's success by accomplishing other duties as assigned

**KNOWLEDGE**

- Knowledge of the Nadleh Whut'en community, culture, protocols and practices
- Understands the legacy of Indian Residential School, historical context and impacts
- Upholds Yinka Dene values and sensitivity to the *Whuz Noolh'en* project

**SKILLS AND ABILITIES**

- Proficient In:
  - Information technology (computers, mobile devices, etc)
  - Microsoft Office Suite applications (Word, Excel, Outlook & Powerpoint)
  - Virtual communication platforms (Zoom, Teams, etc)
  - Office equipment (fax machines, printers, copiers and scanners)
- Exceptional interpersonal, written and verbal communication skills
- Database file management and records maintenance skills
- Attention to detail and problem-solving skills
- Excellent time management skills and the ability to prioritize work
- Strong organizational skills and the ability to multi-task

**QUALIFICATIONS AND EDUCATIONAL REQUIREMENTS**

- Grade 12 Dogwood Diploma or equivalent
- Applied Business Technology Certificate or equivalent is beneficial
- Minimum of 3 years experience or equivalent combination of education and experience
- Valid Class 5 or 7 Drivers License and a reliable vehicle

**To apply, forward a current resume in pdf format by e-mail to [tluggi@nadleh.ca](mailto:tluggi@nadleh.ca) on or before the closing deadline of 4:30 pm Monday May 6<sup>th</sup> 2024**

**Wage Range: \$17.86 to \$30.00 per hour based on qualifications and experience**

**Only those selected for an interview will be notified**

PLEASE TAKE NOTICE, AS OF MAY 1/2024 PATIENT TRAVEL WILL ONLY BE PAID AFTER HEALTH CLERK HAS RECEIVED YOUR CONFIRMATION SHEET.

PLEASE SEE HEALTH CLERK RECEPTION FOR NEW FORMS.

THIS IS FNHA'S POLICY AND HAS BEEN IN PLACE ALL ALONG SORRY FOR ANY INCONVENIENCE THIS MAY CAUSE YOU AND THANK YOU FOR YOUR COOPERATION IN THIS MATTER.

ANY QUESTIONS PLEASE ASK KAREN GEORGE, ROSE DASILVA OR MYSELF, WANDA LESLIE.

THANK YOU ONCE AGAIN.

# Join Our Team

## Blackwater Mine

- Manager - Geotechnical Engineering
- Buyer
- Superintendent - Electrical
- Superintendent - Fixed Plant Maintenance
- Planner - Fixed Plant Maintenance
- Supervisor - Fixed Plant Maintenance
- Supervisor - Mobile Maintenance
- Superintendent - Mobile Maintenance
- Chief Metallurgist
- Metallurgist
- Trainer - Processing
- Senior Mine Engineer
- Senior Geologist
- Superintendent - Processing
- Superintendent - Mining
- Superintendent - Technical Services
- Manager - Technical Services

## Vancouver

- Manager Permitting and Compliance (Environment)

## Prince George

- Accountants Payable Specialist

Apply at: [artemisgoldinc.com/careers](https://artemisgoldinc.com/careers)



# **Ne Dzi Soo Naoodleh (Healing Our Hearts)**



20 spots  
available  
Child minding  
paid for.

## **COME & JOIN US FOR OUR WOMEN'S HEALING CAMP in Smithers**

**STARTS:  
May 16th to  
May  
21st, 2024**

**THIS CAMP IS FOR THE  
WOMEN IN THE  
COMMUNITY OF  
NADLEH, WHO WOULD  
LIKE TO BETTER  
THEMSELVES WITH  
TRADITIONAL  
TEACHING**

**FOR MORE INFORMATION CONTACT : KAREN GEORGE  
(250)-690-7272 OR (778)-259-1269**



# Roots of Reconciliation

**(INDIGENOUS)**

**JUNE 3RD-6TH 2024 9:00AM-4:30PM  
NADLEH WHUT'EN FIRST NATION, BC**

TO REGISTER PLEASE VISIT OUR WEBSITE  
[WWW.RETURNINGTOSPIRIT.ORG](http://WWW.RETURNINGTOSPIRIT.ORG)

THANK YOU TO OUR FUNDERS



First Nations  
Health Authority

# DAKELHNE

## Save the Date

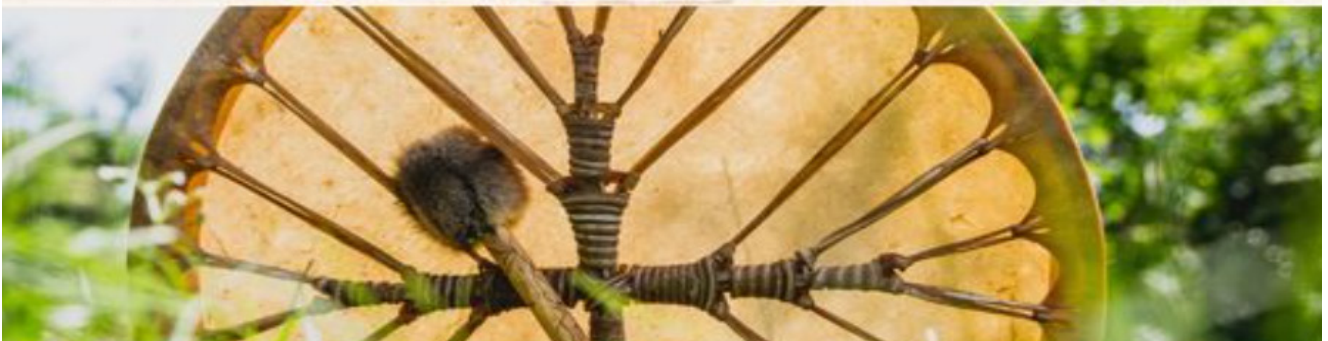
Sept 28 & 29th in Prince George

# ALL CLANS GATHERING: DAKELH K'OH YALHTUK

Join us in revitalizing the **Dakelh language!**  
Mark your calendars, get your travel plans  
ready, and stay tuned for more!

*~ All Dialects Encouraged ~*

Note: This event is organized independently.  
To contribute to event planning contact  
[marion.erickson@unbc.ca](mailto:marion.erickson@unbc.ca)



Dear Nadleh  
Whut'en  
Members,

We're happy to  
announce that  
Noel Ketlo Sr.  
will be  
driving the  
Community Bus  
to Vanderhoof  
on May 5th  
for the MMIW  
Walk, which  
begins at 11  
am. Your  
presence and  
support are  
invaluable as  
we stand  
together in

remembrance  
and solidarity.  
Please mark  
your calendars  
and join us for  
this important  
event.

Date: May 5th  
Departure  
Time: 9:30 am  
Starting Point:  
Nadleh Store  
Event: MMIW  
Walk  
Location:  
Vanderhoof  
Time: 11 am

Let's unite as a  
community to  
honor and

support the  
Missing and  
Murdered  
Indigenous  
Women. Your  
participation  
makes a  
difference.

For more details  
or to reserve  
your seat on  
the bus, please  
contact Serina  
Greene at the  
Band Office.







Dear Parents and Guardians,

We hope this message finds you well and filled with the warmth of spring.

We're delighted to share some exciting updates from Nadleh Koh School:

**Welcoming Peggy Luggi:** Since January, we've been fortunate to have Margaret (Peggy) Luggi join our team three days a week. Peggy has been engaging with our children, imparting the beauty of the Dakelh language through playful interactions. Her presence adds depth to our educational environment, fostering a stronger connection to our cultural roots.

**Monthly Draw:** As part of our ongoing efforts to encourage regular attendance and participation, we've introduced a monthly draw. Each child receives a ticket for every day of attendance, making them eligible for a chance to win a \$150 gift card or meat package. This initiative not only incentivizes consistent attendance but also adds an element of excitement and reward for our students.

**Rattle Making Workshop with Dennis Cumberland:** From April 22nd to April 24th, we had the pleasure of hosting Dennis Cumberland for a rattle making workshop. Each child had the opportunity to craft their own unique rattle, with additional

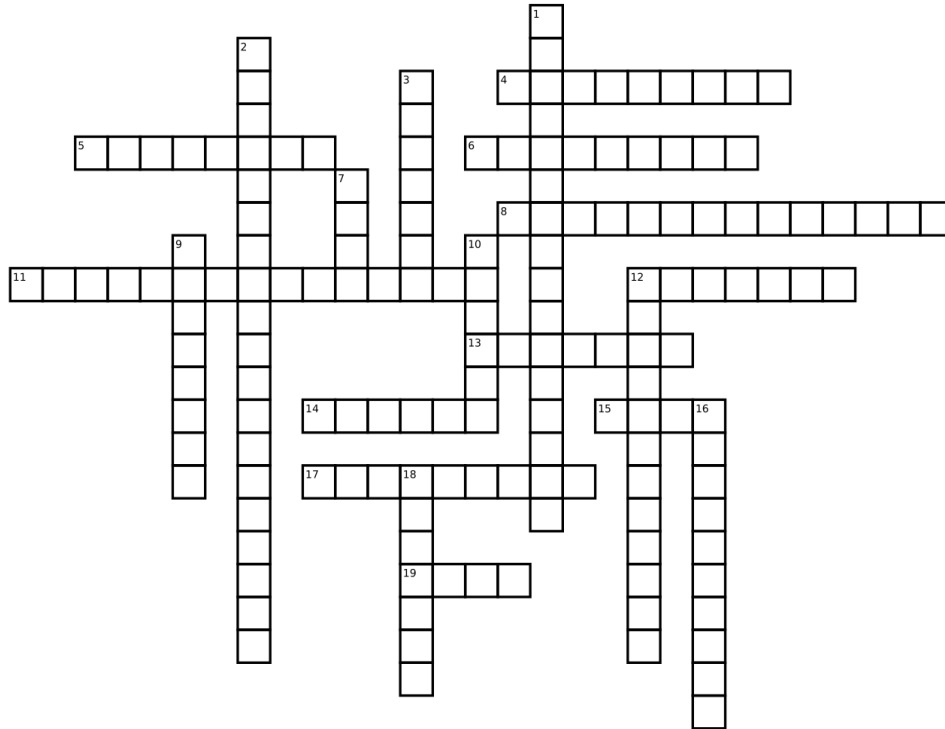
rattles made to take home. This hands-on experience not only nurtured creativity but also provided a tangible connection to our cultural heritage.

We're incredibly grateful for the ongoing support and engagement of our community. These initiatives wouldn't be possible without your cooperation and enthusiasm.

As always, if you have any questions or feedback, please don't hesitate to reach out to us. We look forward to continuing our journey together in nurturing the growth and development of our children

pic and article by Johnny Ketlo

# Superheroes and Villains



Down:

- 1. Squirrel girl
- 2. Spiderman
- 3. Nightwolf
- 7. Smoke
- 9. Iceman
- 10. Crow
- 12. Green Arrow
- 16. Bumblebee
- 18. Starfire

Across:

- 4. Raven
- 5. Wolverine
- 6. White Rabbit
- 8. Red Skull
- 11. Hawkeye
- 12. Batman
- 13. Sandman
- 14. Sunfire
- 15. Robin
- 17. Catwoman
- 19. Goose

# Nadleh Nation Celebrates Swearing-In Ceremony for Newly Elected Chief and Council



Nadleh Whut'en recently held a swearing-in ceremony to inaugurate their newly elected Chief and Council. The event, marked by a renewed commitment to the community's welfare and progress.

The newly elected officials took their oaths of office, and embraced not only the responsibilities entrusted to them but also the hopes and dreams of their constituents.

At the heart of the ceremony was a formal expression of gratitude to the outgoing Chief and Council for their dedicated service to the community.

Addressing the gathering, the newly elected Chief expressed gratitude for the trust placed in their leadership and pledged to serve with integrity, compassion, and vision. They acknowledged the challenges ahead but emphasized the collective strength and resilience of the Nadleh people to overcome adversity and seize opportunities for growth and development.

In this spirit of optimism and unity, the Nadleh Nation embraces the challenges and opportunities that lie ahead.

pics and article by Johnny Ketlo



## **Nadleh Whut'en Chief & Council Portfolios**

### **Chief Beverly Ketlo**

Economic Development

Lands & Trusts/Natural Resources/Fisheries

### **Councillor Eleanor Nooski**

Housing

Social Development

### **Councillor Ashley Heathcliff**

Child & Family Services

Lands & Trusts/Natural Resources/Fisheries

Economic Development

### **Councillor Cheryl Parsons**

Health

Education

Child & Family Services

### **Councillor Mark Lacerte**

Housing

Operations & Maintenance

Lands & Trusts/Natural Resources/Fisheries

### **Councillor Tanya Stump**

Culture & Language

Lands & Trusts/Natural Resources/Fisheries

Health

Education

Good afternoon! Coming up next month I will have an Elders walk every Wednesday from 1:30pm - 2:30 pm. Transportation to and from will be available for all Elders who would love to participate in this program. I will have helpers come out to walk or assist as well.



**Elders Walking Group**

**May 8, 15, 22, 29**

**1:30 pm**

**Start at the Nadleh Band Office**

Transportation available within Nadleh

Contact Tianna Ketlo at  
250-690-7272 or [tketlo@nadleh.ca](mailto:tketlo@nadleh.ca)



**Carrier Sekani Family Services**

April 24 at 10:30 AM · 🌐

Looking for a fun family activity to do in the sun? 😊

Join the Family Walking Group for four sessions this May and reach your step goals in a fun group environment! 🏃‍♂️👨‍👩‍👧






May 7, 14, 21, and 28

4:15 - 5:15pm

Meet at the Nadleh Band Office

Contact Tianna Ketlo at 250-690-7272 or [tketlo@nadleh.ca](mailto:tketlo@nadleh.ca) for more info.

# MAY 2024

| Sunday  | Monday                                 | Tuesday  | Wednesday   | Thursday   | Friday   | Saturday |
|---|--|--|---|--|--|----------|
| 28 April  | 29 April                               | 30 April   | 1   | 2  | 3  | 4        |
| 5<br>Red Dress Day (MMIWG2S)<br> | 6<br>Poker Night                       | 7<br>Men's Group<br>Grief and Loss group<br>Family walking group<br>4:30pm-5:15pm<br>Men's Group     | 8 Dr John<br>Volleyball/Dinner @5pm-7pm<br>Elders walking group. 1:30-2:30<br>Ember of Hope                         | 9<br>Women's Group<br>Gym Nights 6-8p<br>Women's Group   | 10<br>Healing Fire<br>Pro D Day<br>Dr John<br>Kids Gardening Day,<br>Healing fire<br>Arts, crafts and<br>activities 10am-2pm | 11       |
| 12 Mother's Day<br>              | 13<br>Poker Night                      | 14<br>Men's Group<br>Family walking group 4:30pm-5:15pm  | 15<br>Elders walking group<br>Transformations   | 16<br>Women's Group<br>Moosehide Campaign Day<br> | 17<br>Healing Fire<br>                      | 18       |
| 19  | 20<br>Poker Night<br>Victoria Day Stat | 21<br>Men's Group<br>Elder's tea and beading<br>Family walking group<br>4:30pm-5:15pm<br>Men's Group | 22<br>Youth beading 4:30pm-7:00pm<br>Elders walking group 1:30-2:30   | 23<br>Women's Group<br>Gym Nights 6-8  | 24<br>Healing Fire   | 25       |
| 26<br>Bike Rodeo in Fraser Lake 11am  | 27<br>Poker Night                      | 28<br>Men's Group<br>Dr Danette<br>Family walking group<br>4:30pm-5:15pm                             | 29 Dr John<br><br>Ember of Hope | 30<br>Women's Group<br>Gym Nights 6-8<br>Dr Terri<br>Women's Group   | 31<br>Healing Fire<br>                    |          |

Chelsey Ziler(MH Supports):Wednesday, Thursday afternoons, Friday, Lindsey Pikkarainen(MH Clinician): Tuesday

Gardening in the green house Every Tuesday and Thursday 10am-11am

Women's Wellness Retreat May 16<sup>th</sup> to May 21<sup>st</sup>,2024



pics by Lucas Bhatoa





# Nadleh Whut'en Completes Type 2 Initial Attack Firefighting Training: Strengthening Community Resilience

Nadleh Whut'en recently held a significant stride towards bolstering community resilience and emergency response capabilities, the Nadleh Whut'en recently concluded their Type 2 Initial Attack Firefighting Training with commendable participation. With 23 individuals in attendance, this turnout reflects a notable increase from the previous year's enrollment of 13, marking a substantial enhancement in preparedness and capacity.

The training, which saw a turnout exceeding the maximum capacity of 20, underscores the enthusiastic commitment of community members towards safeguarding their lands and livelihoods against the threat of wildfires. Despite logistical constraints, the organizers graciously accommodated the additional participants, exemplifying a spirit of inclusivity and dedication to collective safety.

Looking ahead, the successful

completion of this training program signifies the readiness of Nadleh Whut'en to mobilize resources effectively in the event of wildfire incidents. With the establishment of an Initial Attack crew and two Type 3 crews, alongside the deployment of Emergency Transport Vehicles (ETVs) in collaboration with BC Wildfire Services, the community stands poised to confront the upcoming fire season with vigilance and professionalism.

Interested individuals keen to contribute to this vital endeavor are encouraged to reach out to Ashley Heathcliff, the esteemed Emergency Program Coordinator, by submitting their resumes or inquiries via email. This proactive step not only facilitates the recruitment process but also ensures a streamlined and efficient deployment of resources, maximizing the effectiveness of wildfire response efforts.

- [aheathcliff@nadleh.ca](mailto:aheathcliff@nadleh.ca)

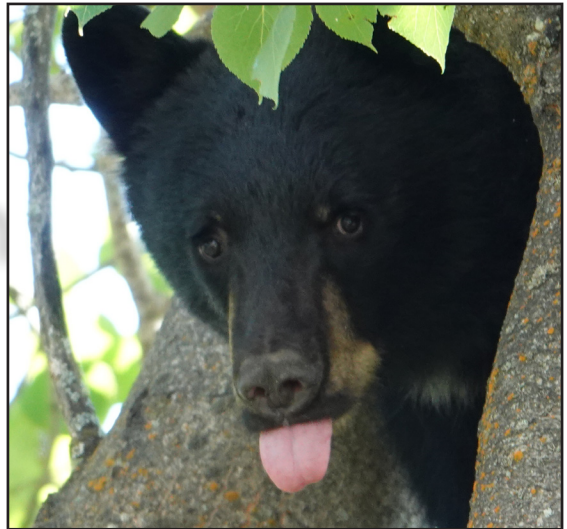
In embracing this proactive approach to community safety

and emergency preparedness, Nadleh Whut'en exemplifies a commendable ethos of proactive engagement and mutual support. Through collaborative initiatives and ongoing training, the community fortifies its resilience against natural disasters, embodying a steadfast commitment to safeguarding lives, property, and the cherished landscapes that define their heritage.

As the fire season looms on the horizon, Nadleh Whut'en stands united in their resolve to confront adversity with courage and resilience. The completion of Type 2 Initial Attack Firefighting Training serves as a testament to their unwavering dedication to collective well-being and underscores their readiness to face the challenges that lie ahead with unwavering determination and professionalism.

article by Johnny Ketlo

# Attention Nadleh Whut'en Community: Be Bear Aware!



Attention Nadleh Whut'en Community: Be Bear Aware!

As spring emerges and nature awakens, it's crucial to remain vigilant of our surroundings, especially with recent sightings of sizable bears in our vicinity. With their presence in mind, let's prioritize safety and awareness to ensure harmonious coexistence.

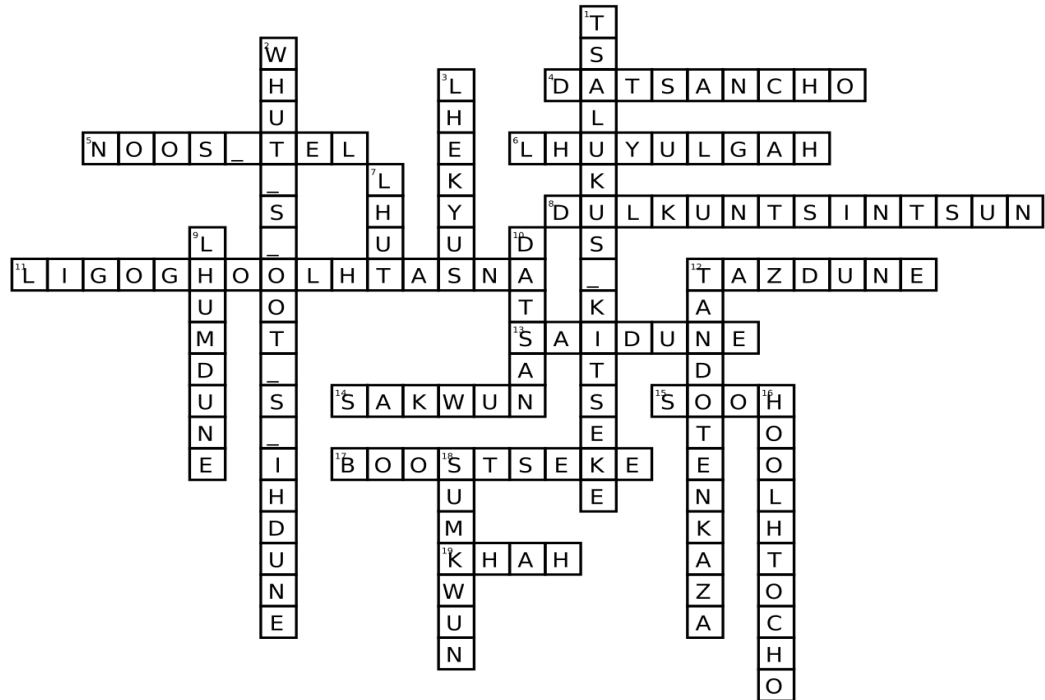
Remember to securely store food and waste, minimizing attractants that could draw bears closer to our homes. When exploring the outdoors, travel in groups, make noise, and keep pets leashed to reduce the risk of unexpected encounters.

Additionally, familiarize yourself with bear behavior and how to respond calmly and confidently if faced with one. By staying informed and proactive, we can uphold the safety of both our community and our wild neighbors.

Let's embrace our role as stewards of the land and foster a culture of respect and mindfulness towards all creatures who share our environment. Together, we can enjoy the beauty of nature while safeguarding our well-being. Stay bear aware, stay safe!

pic and article by Johnny Ketlo

# Superheroes and Villains



## Down:

1. Squirrel girl
2. Spiderman
3. Nightwolf
7. Smoke
9. Iceman
10. Crow
12. Green Arrow
16. Bumblebee
18. Starfire

## Across:

4. Raven
5. Wolverine
6. White Rabbit
8. Red Skull
11. Hawkeye
12. Batman
13. Sandman
14. Sunfire
15. Robin
17. Catwoman
19. Goose

**JOB Title:** 'antsi ne khunik ne zek hoodul'eh  
Pathways to Language Vitality Project  
**Department:** Nadleh Language & Culture Program  
**Position:** Full-time, 35 hours per week  
**Compensation:** Salary Range \$22 to \$25 per hour  
**Application Deadline:** May 17, 2024, at 4:30 pm  
**Instructions:** Email resume and a cover letter:  
Rose DaSilva, Executive Manager at: [rdasilva@nadleh.ca](mailto:rdasilva@nadleh.ca)  
**Start date/end date:** June 3, 2024, to March 31, 2025



**Job Summary**

- Work closely with Language and Culture Coordinator & Nadleh Language Guiding Team.
- Create and maintain relationships with Fluent Speakers, Elders, Knowledge Holders, beginner learners and creating more language speakers.
- Host community language sessions, plan, implement Nadleh Language Planning Goals & Objectives: Language Nest, Beginner Classes, Silent Speakers & Arts.
- Seek funding opportunities for language, culture, and art projects.
- Network with other first nations language groups, and organizations.
- Understand and follow guidelines of Bill C-91, Indigenous Language Act Legislation.

**Minimum Qualifications:**

- Skills in coordination and communication with First Nation communities and/or equivalent combination of education, training, and experience.
- Personal Connection in working with Elders, Azah'ne, and Adult Knowledge Holders.
- Ability to work respectfully with first nation community and with a team. To multi-task, set priorities effectively, time management, attention to detail and organization of filing system.
- Demonstrate drive and capacity to work independently with minimal directives and leadership.
- Knowledge of Nadleh Dakelh language would be an asset.
- Computer literacy, including knowledge of/and experience with variety of computer-based information systems to document managing, MS Office Software and multi-media resources.
- A valid Class 5 BC Driver's License and access to a vehicle daily.
- Must provide a Criminal Record Check.
- Flexibility in Work Schedule and travel may be required.

Nadleh Whut'en First Nations offers a competitive compensation package. Preference will be given to Indigenous people and applicants are encouraged to self-declare. We thank all who apply and advise that only those selected for further consideration will be contacted.

**Application deadline: May 17, 2024, at 4:30 pm**  
Submit resume & cover letter to Rose DaSilva, Executive Manager  
Fax to: (250) 690-7316  
Email: [rdasilva@nadleh.ca](mailto:rdasilva@nadleh.ca)  
Address: Box 36, Fort Fraser, BC V0J 1N0



# NOTICE

Nadleh Whut'en Indian Band's  
*Whuz Noolh'en "we are looking / we are searching"* project  
engaged GeoScan Subsurface Surveys Inc.



<https://www.geoscan.ca/>

for Ground penetrating radar (GPR) and Magnetometry at  
Tseyaz Bunk'ut (the site of the former Lejac Indian Residential  
School LIRS) from March to April 2024



Should you have any questions, please contact:  
Terry Luggi, Indian Residential School Project Manager  
Office (250) 690 - 7211 ext #105 / Cell (236) 331 – 5836 / E-mail [tluggi@nadleh.ca](mailto:tluggi@nadleh.ca)

24 Hour Supports are available through these Help Lines:  
National Indian Residential School (IRS) [1-866-925-4419](tel:1-866-925-4419)  
Indian Residential School Survivors Society (IRSSS) 1-800-721-0066  
Hope for Wellness [1-855-242-3310](tel:1-855-242-3310) or online chat at [hopeforwellness.ca](http://hopeforwellness.ca)

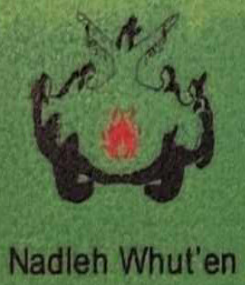
# Family Walking Group

**May 7, 14, 21, 28**

**4:15 - 5:15pm**

**Start at the Nadleh Band Office**

Contact Tianna Ketlo at  
250-690-7272 or [tketlo@nadleh.ca](mailto:tketlo@nadleh.ca)



Nadleh Whut'en



CARRIER SEKANI  
FAMILY SERVICES

# Volleyball Scrimmage + Dinner Event



**EVERYONE IS MORE THAN WELCOME TO JOIN!! 😊**

Last Volleyball game night was a success! Nothing but smiles on faces filled with laughter, cheering and recreational fun! I am so pumped to announce that I will be bringing it back on **MAY 8<sup>th</sup>, 2024**. Dr John will be joining along with a few workers from CSFS. I hope to see you there!

**When:** May 08<sup>th</sup>, 2024

**Volleyball Game Time:** 5pm – 6:15pm

**Dinner Time:** 6:15pm – 7:00pm

**Where:** Nadleh Whut'enne Yah Administration and Cultural Building (Gymnasium)



If you have any questions, please contact the Recreation Centre Coordinator Tiana Ketlo

Cell # 1(250)-944-0890

Email: [tketlo@nadleh.ca](mailto:tketlo@nadleh.ca)

